



RMW

San Francisco
Opening Fall 2022

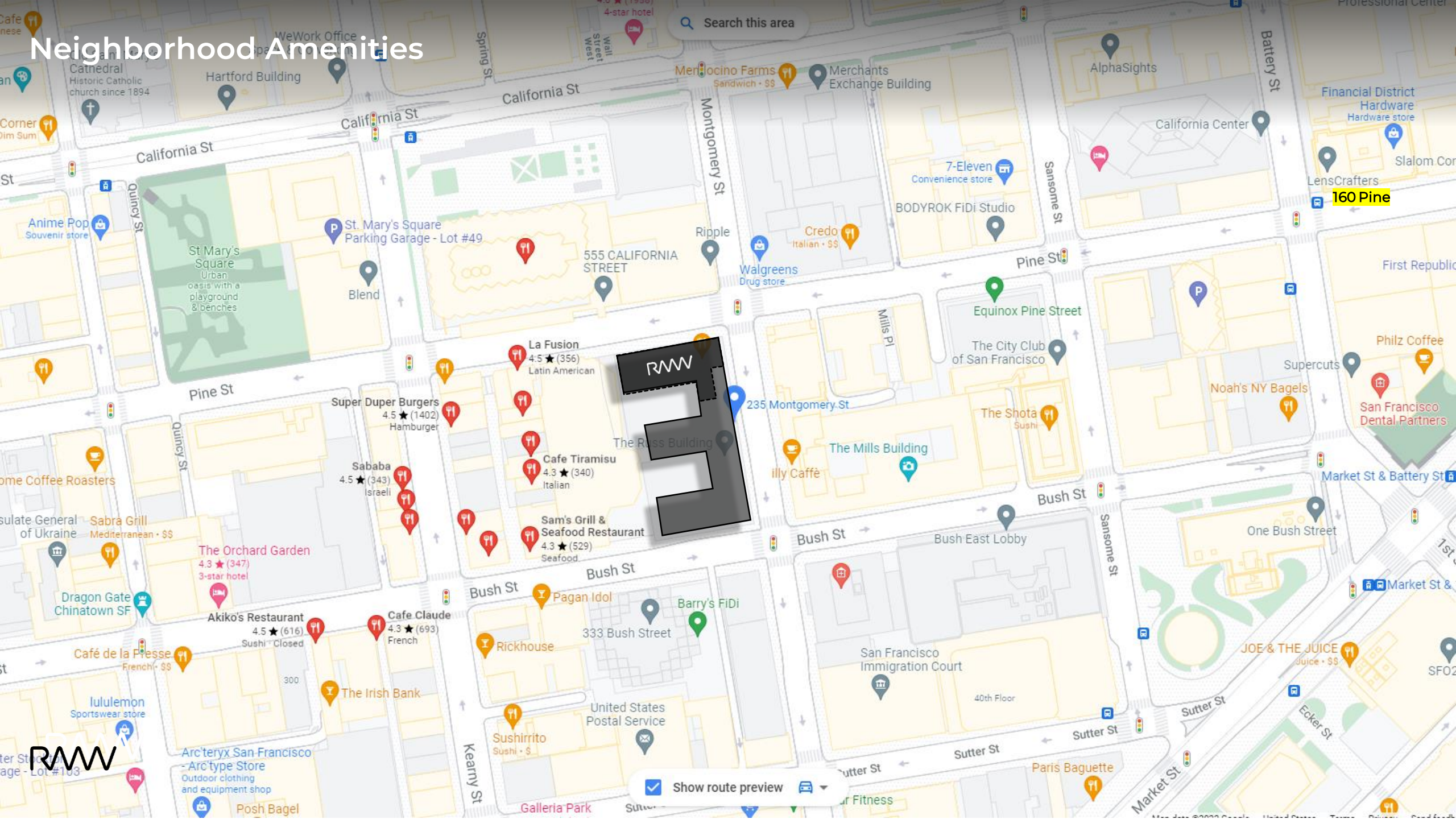
RMW team

- SF Principals
- Haley Conway
- Lindsay Wiemar
- Cindy Mark

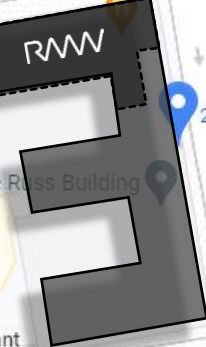
Key Partners

- Shorenstein
- RMR Construction
- OWP (furniture / AV)

Neighborhood Amenities



Search this area



Show route preview

RWW

Commute Options

235 Montgomery Street

Financial District, San Francisco, 94104

Commute to **Downtown San Francisco**

🚗 1 min 🚌 5 min 🚲 1 min 🚶 7 min [View Routes](#)

📍 Favorite 🗺 Map

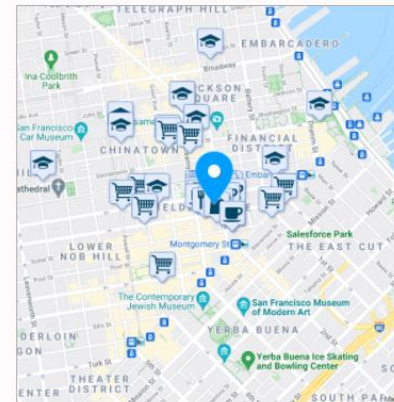
[More about 235 Montgomery Street](#)

Walk Score 100 **Walker's Paradise**
Daily errands do not require a car.

Transit Score 100 **Rider's Paradise**
World-class public transportation.

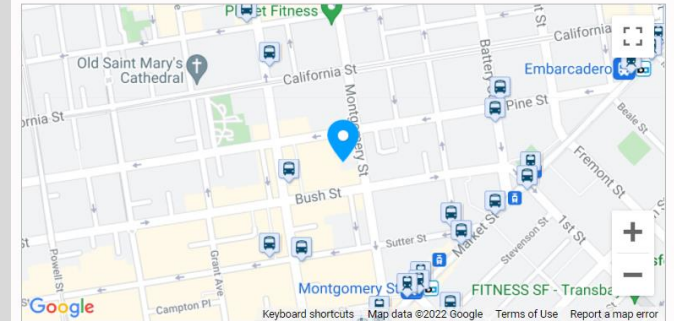
Bike Score 85 **Very Bikeable**
Biking is convenient for most trips.

[About your score](#)



Transit Score 100 Rider's Paradise

235 Montgomery Street is a Rider's Paradise which means world-class public transportation. Car sharing is available from Zipcar, Getaround and City CarShare.



🚆 Rail lines:

F MARKET & WHARVES	0.2 mi	YL-N Antioch	0.2 mi
RD-N Richmond	0.2 mi	BL-S Daly City	0.2 mi
GN-N Berryessa/North San J...	0.2 mi	YL-S San Francisco Internati...	0.2 mi
BL-N Dublin/Pleasanton	0.2 mi	GN-S Daly City	0.2 mi
RD-S Millbrae (Caltrain Tran...	0.2 mi	N JUDAH	0.2 mi

🚌 Bus lines:

8 BAYSHORE	0.1 mi	30 STOCKTON	0.1 mi
45 UNION-STOCKTON	0.1 mi	91 3RD-19TH AVE OWL	0.1 mi
15 BAYVIEW HUNTERS POIN...	0.1 mi	38 GEARY	0.2 mi
5 FULTON	0.2 mi	5R FULTON RAPID	0.2 mi
38R GEARY RAPID	0.2 mi	N-OWL OWL JUDAH	0.2 mi

Walkscore rating

235 Montgomery

Russ Building facts:

Built: 1927
Stories: 31

LEED Gold and WELL certified

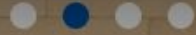
- Registered California State Historic Landmark
- Neo-Gothic architecture
- Designed by George W. Kelham
- Tallest SF building from 1927 to 1964
- Named after Emanuel Charles Christian Russ, built the City's first hotel and one of City's largest landowners.

Lobby

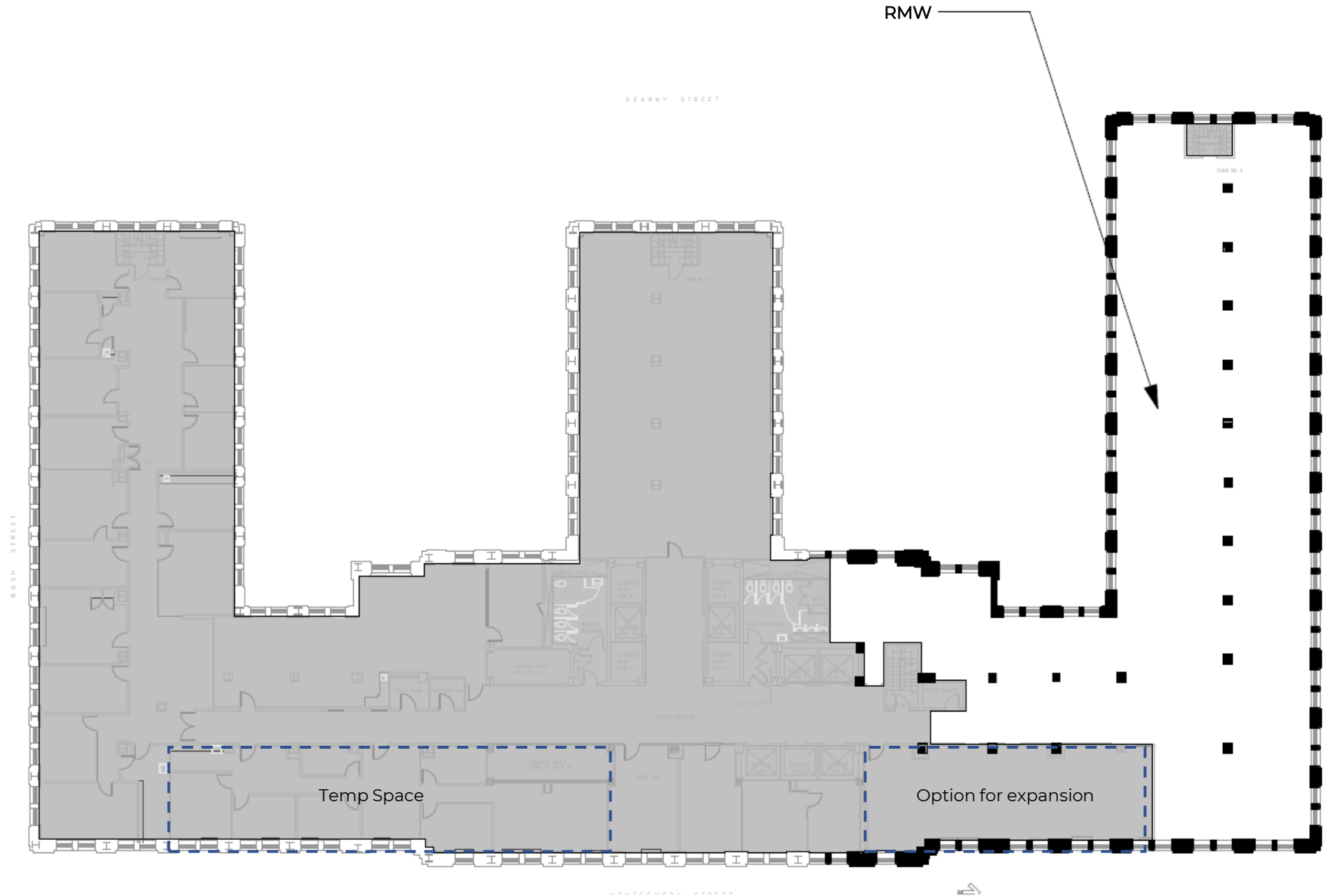


RMW

Elevator Entry



Fourth Floor



RAW

Objective

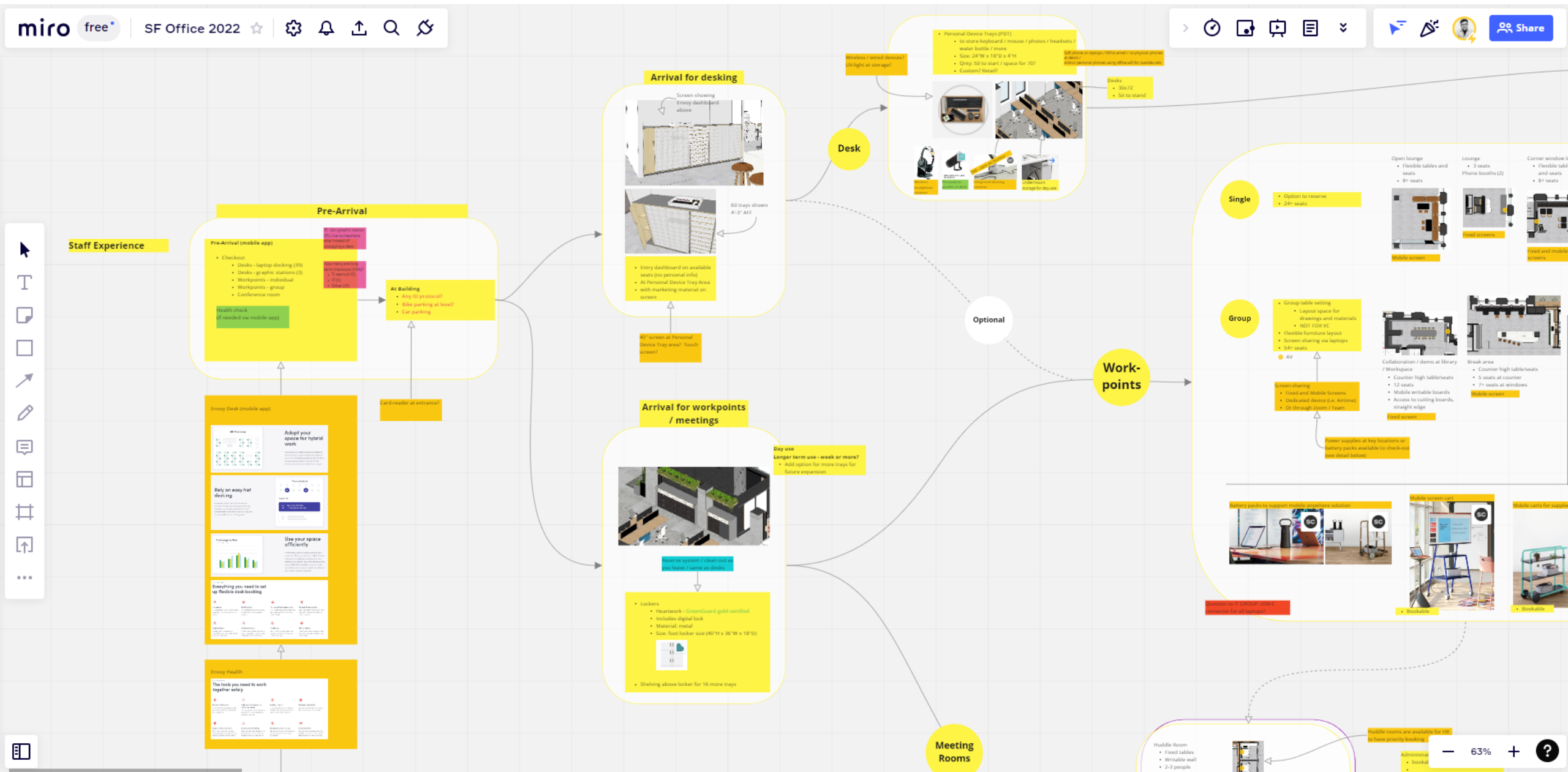
SF hybrid work model = Office as resource for team collaboration, constructive ideation, positive energy, material research, culture and social connection, mentorship and education opportunities, and more.

Objective

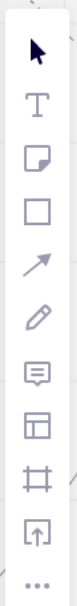
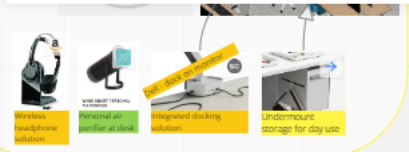
SF hybrid work model = Office as resource for team collaboration, constructive ideation, positive energy, material research, culture and social connection, mentorship and education opportunities, and more.

The new office ecosystem will evolve as we work in the space and strive for improvements. The new space is dynamic.

Workflow Scenarios



Flexible Workpoints



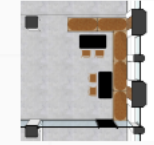
Optional

Workpoints

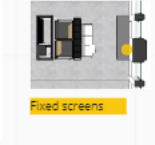
Single

- Option to reserve
- 24+ seats

Open lounge
• Flexible tables and seats
• 8+ seats



Lounge
• 3 seats
Phone booths (2)



Corner window lounge
• Flexible tables and seats
• 8+ seats



(E) Sit-Stand table
• 5 seats

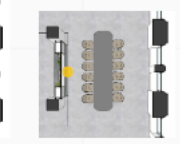
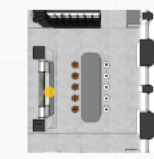
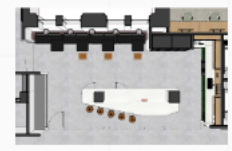


Trash / Recycling locations

Air Quality Indicators and purifiers?

Group

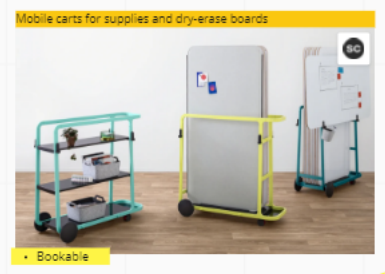
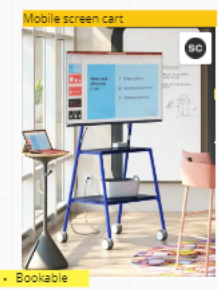
- Group table setting
- Layout space for drawings and materials
- NOT FOR VC
- Flexible furniture layout
- Screen sharing via laptops
- 54+ seats
- AV



- Screen sharing
- Fixed and Mobile Screens
 - Dedicated device (i.e. Airtime)
 - Or through Zoom / Team

Power supplies at key locations or battery packs available to check-out (see detail below)

Test out mobile VC options



Protocol and etiquettes for boards
• saved boards as needed

Question to IT GROUP: USB-C connector for all laptops?

Program Distribution

42

Desks

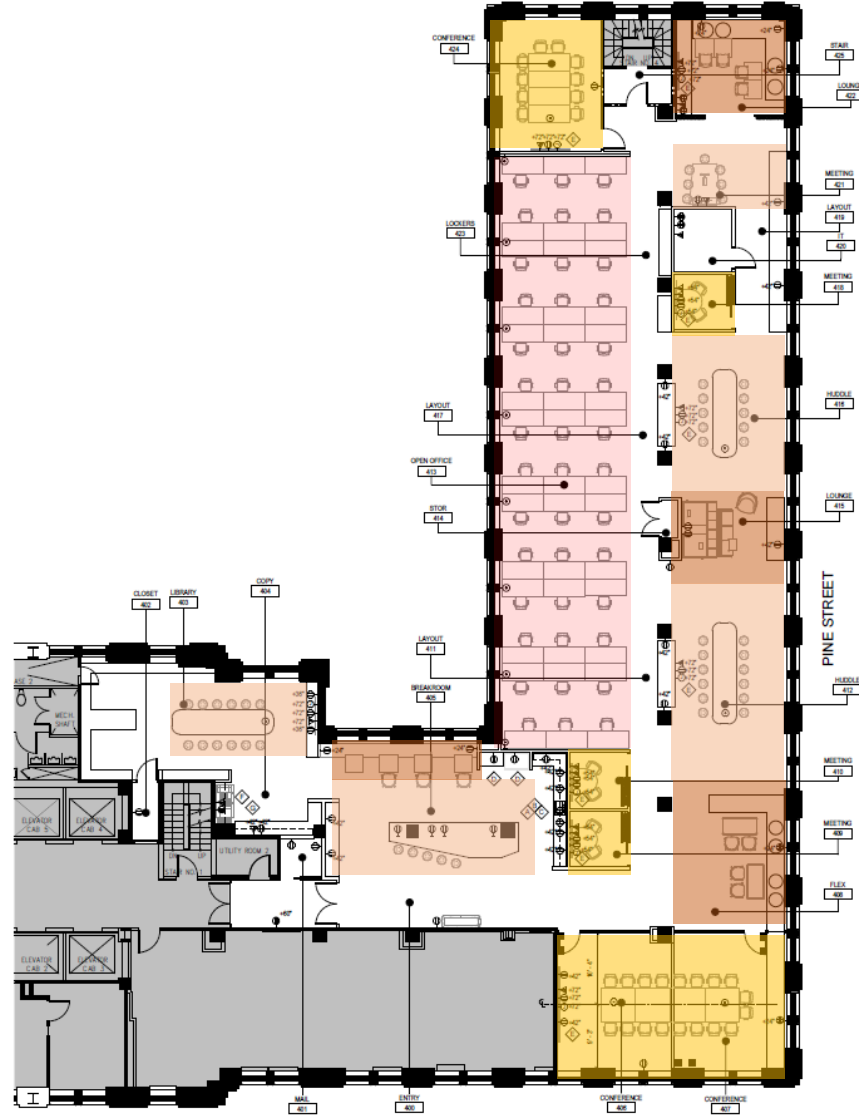
24+

Single workpoints

54+

Group workpoints

** Total 185 seats compared to 65 desks at 160 Pine*



Program Distribution

42

Desks

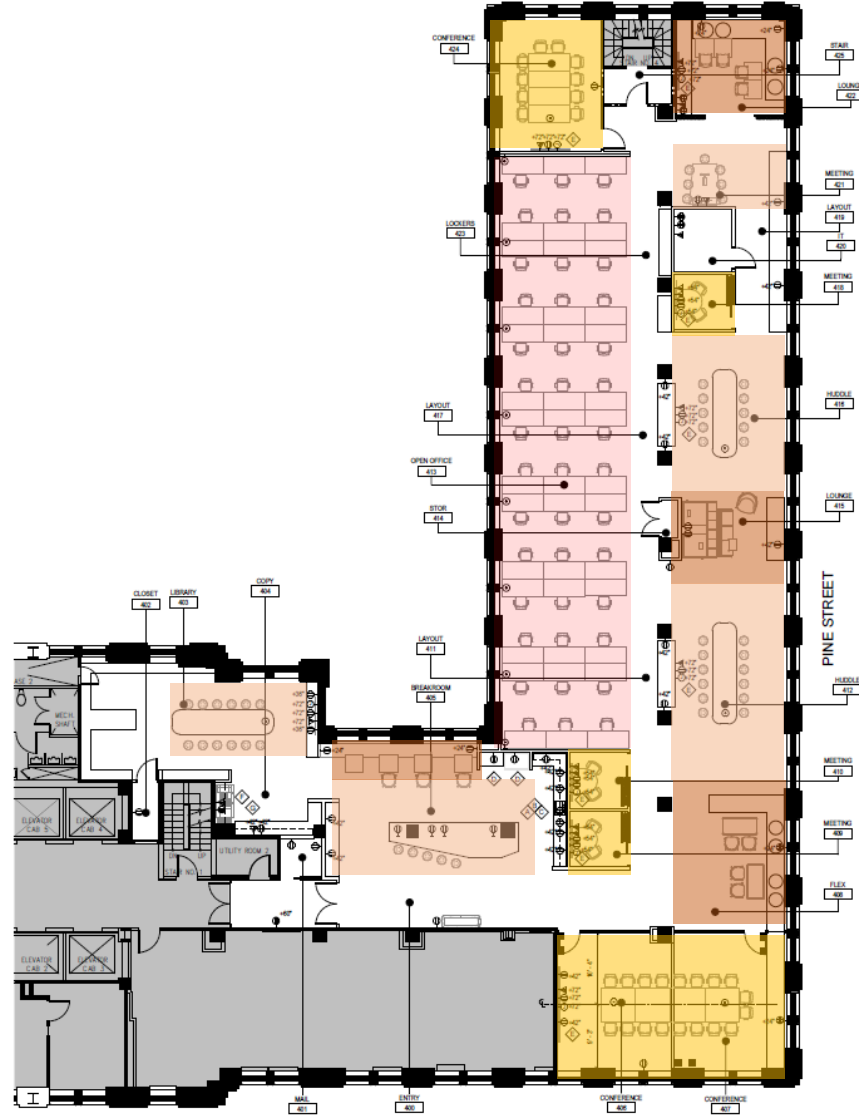
24+

Single workpoints

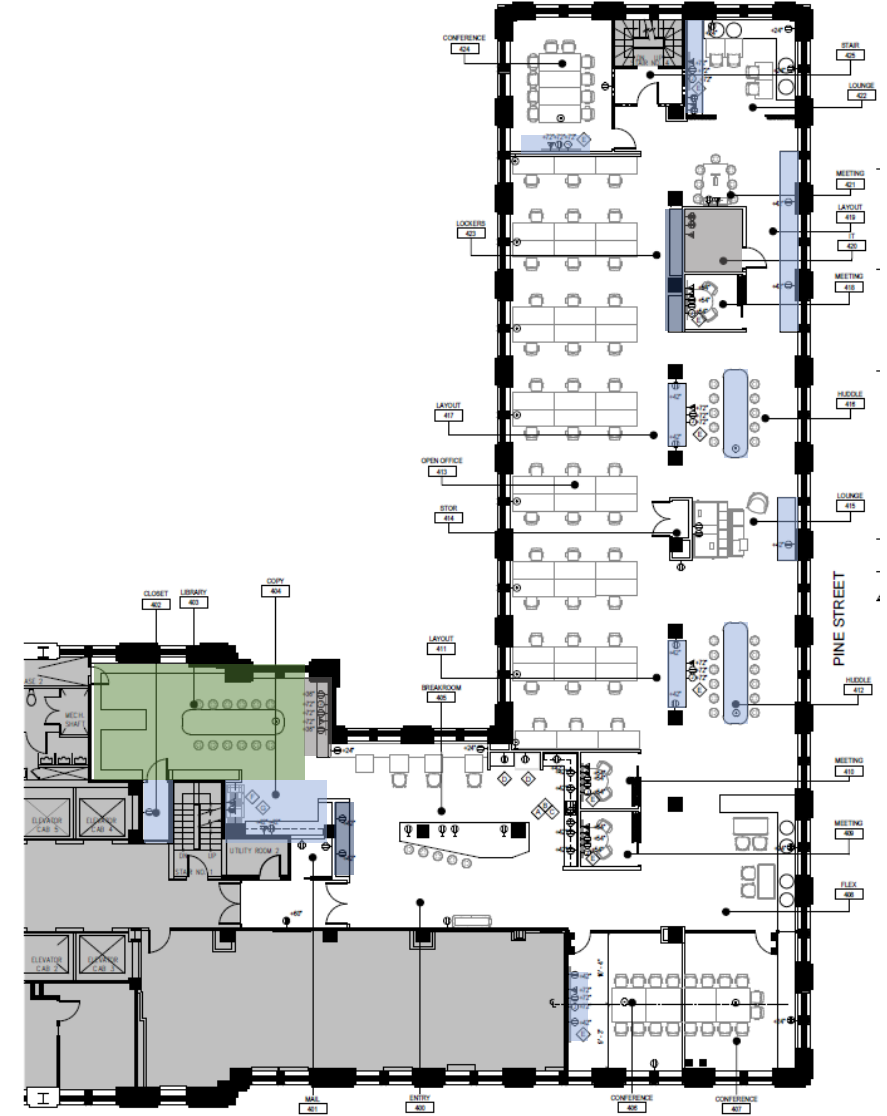
54+

Group workpoints

** Total 185 seats compared to 65 desks at 160 Pine*



Desks + Single and Group Workpoints + Meeting Rooms



Library + Decentralized Support

Hello!



RWV

Access Portal



Welcome Island



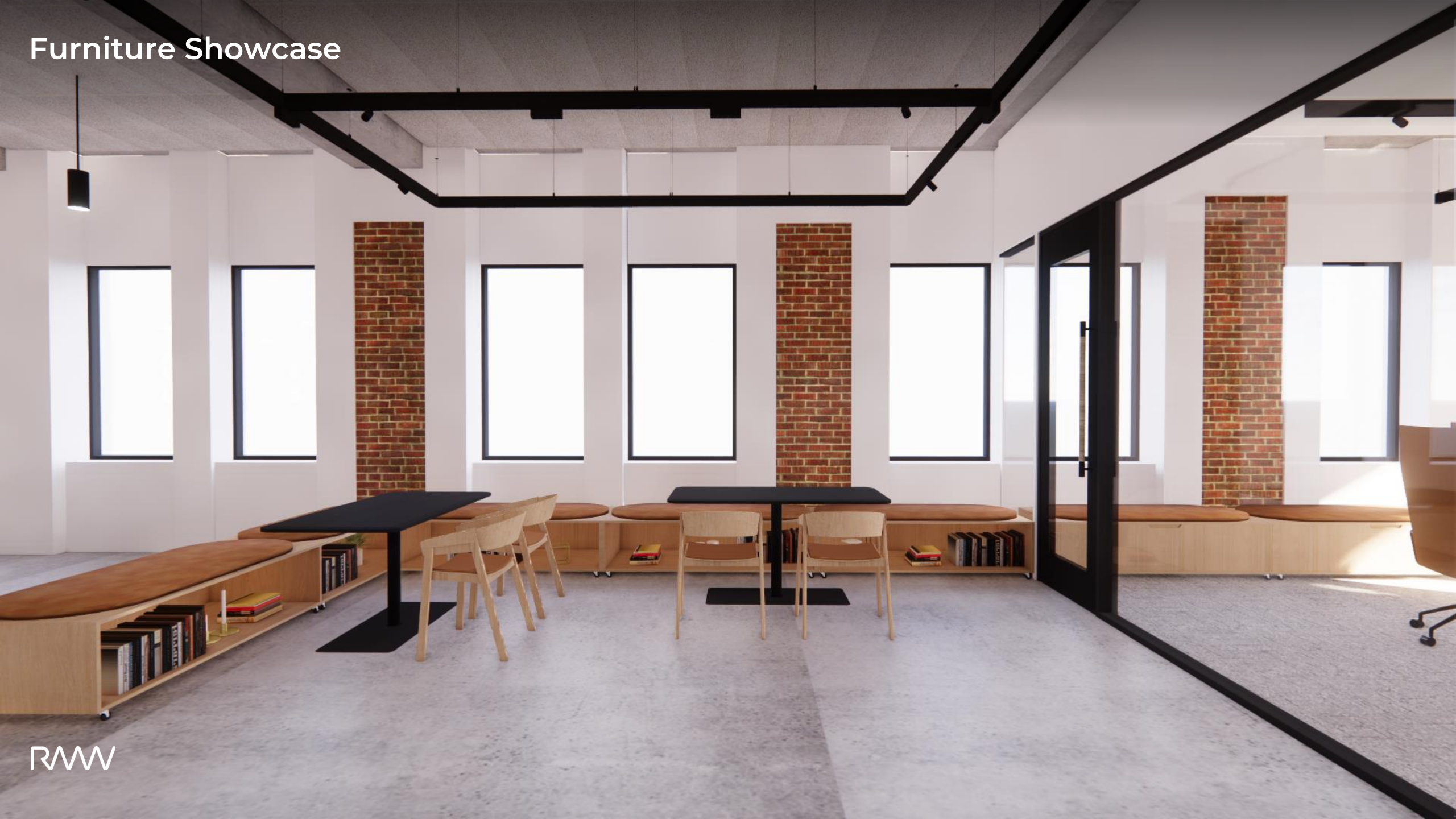
Personal Trays



Stay a bit



Furniture Showcase



Main Conference Room



Main Conference Room / Enclosed



Main Conference Room / Open



Focused Desks



Focused Desks



Corner Lounge



Corner Lounge



Group Workpoints



Group Workpoints



Group Workpoints



Single Workpoints



Construction Progress



Construction Progress



Construction Progress



Thank You!